

# Artera



---

## QUAD

*the closest approach to the original sound*





# Classics For The Modern Age

Quad gave its team of designers and engineers a specific brief for Artera: combine the qualities that have made Quad Solus of Britain's most revered hi-fi marques for many decades with fresh industrial design and the very latest high-performance audio technologies.

Artera's crisp, clean aesthetic both evokes Quad's past and looks forward to the future, with a textured aluminium front panel, thick glass top and CNC-routed heat sinks on either side. The housing provides a rugged structure that resists interference from external vibrations, while the fascia of each player incorporates an intuitive touch-sensitive control, contributing greatly to its sleek design.

The Artera's complete range includes 4 models: Artera Stereo (power amplifier), Artera Play (CD Player / DAC / Preamp), Artera Play+ (bluetooth aptX / CD Player / DAC / Preamp) and Artera Solus (bluetooth aptX / CD Player / DAC / Preamp / Integrated Amplifier).



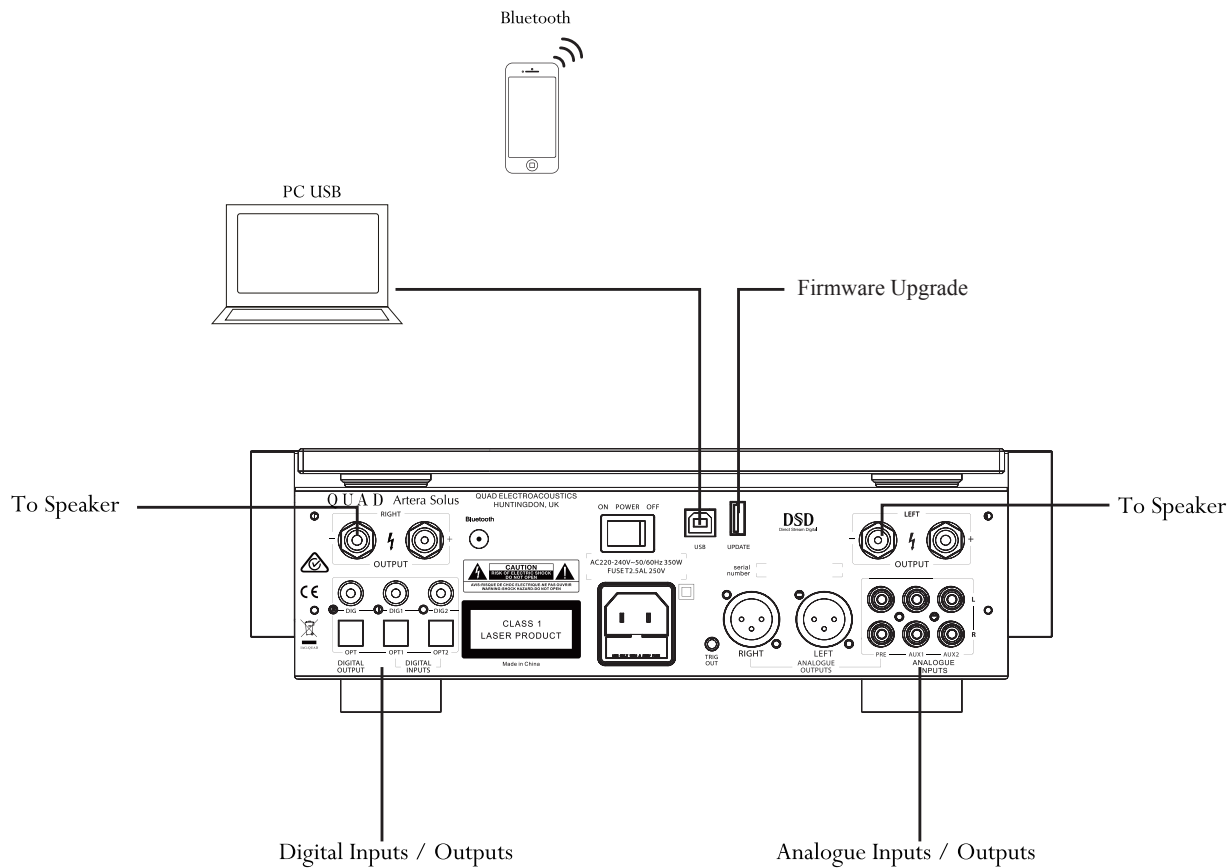
◀ *Quad Artera Play & classic Quad 405 Power amp from 1975 - then and now.*

# Hi-Res Compatability

Despite their attractive simplicity, the four Artera components deliver exceptional sophistication beneath the skin. At the heart of the Artera Play, Play+ and Solus nestles the ESS Sabre32 9018; a 32-bit, eight-channel hybrid multi-bit Delta-Sigma DAC considered by many to be the finest D/A converter chip available for stereo sound. This is Quad's first series to utilise the ESS Sabre DAC, and external digital sources can benefit from its exceptional quality via a range of digital inputs. These include USB, with support for PCM data up to 32-bit/384kHz and also DSD64/128/256, ensuring the Artera Play, Play+ and Solus are fully equipped to make the most of today's hi-res music formats, as well as future advances in ultra-high-definition digital sound.

**DSD**  
Direct Stream Digital

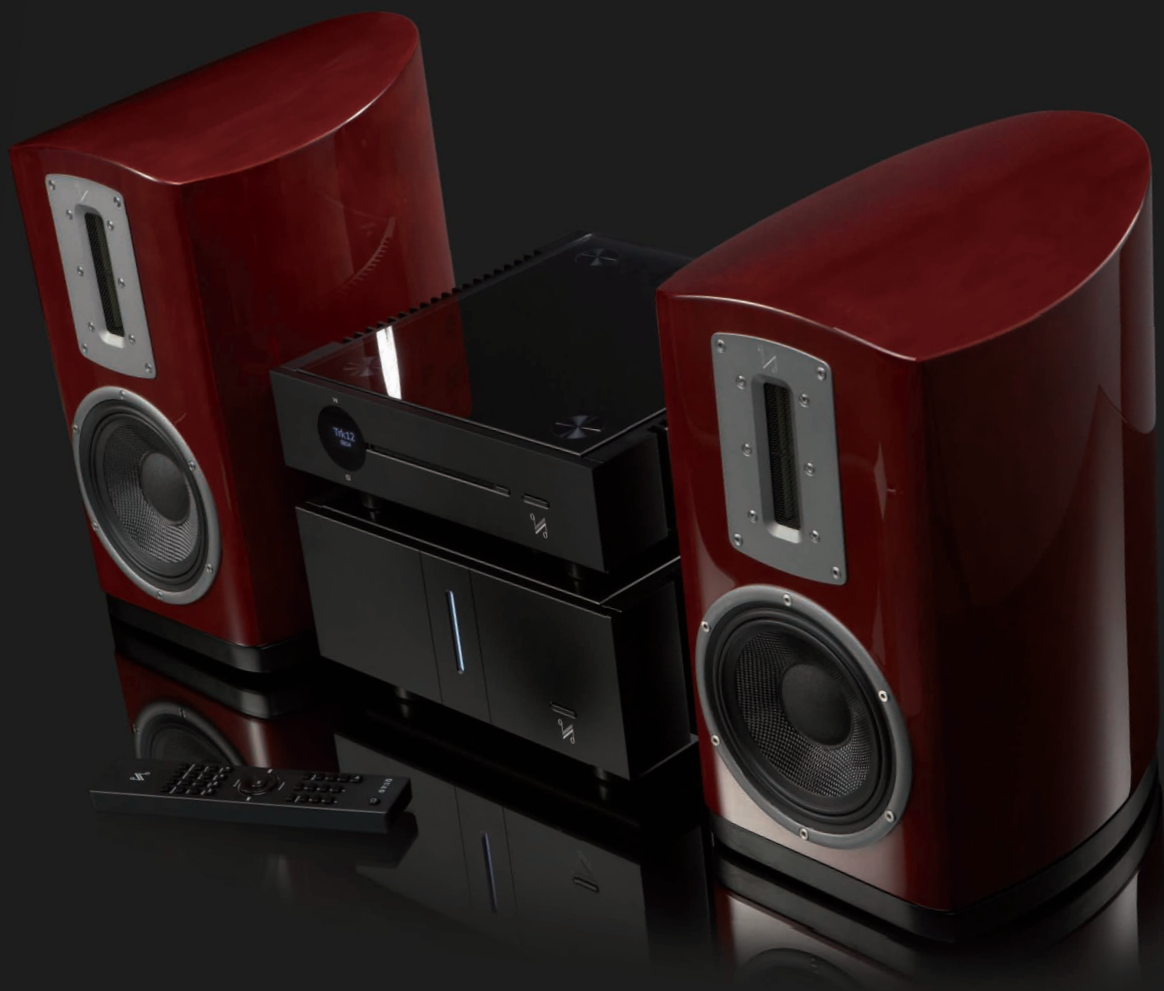




# Artera Solus









# Filters To Suit Every Ear

For CD replay, a new slot-loading mechanism buffers data from the disc before feeding it asynchronously (in order to minimise time domain errors known as ‘jitter’) to the DAC section. Four digital filter options enable users to tailor the Artera Play’s, Play+’s and Solus’s sound, with both CDs and external digital sources, to suit personal taste and the nature of the source material.

Each player within the series features a preamp section which boasts a balanced Class A output stage. Two coaxial and two optical inputs cater for external digital sources alongside the USB input, with a pair of RCA phono inputs handling analogue sources. Analogue outputs are supplied in both single-ended RCA and balanced XLR varieties; a pair of digital outputs (optical and coaxial) and a 12V trigger output complete a comprehensive array of connectivity options.



# Iconic Amplifier Technology

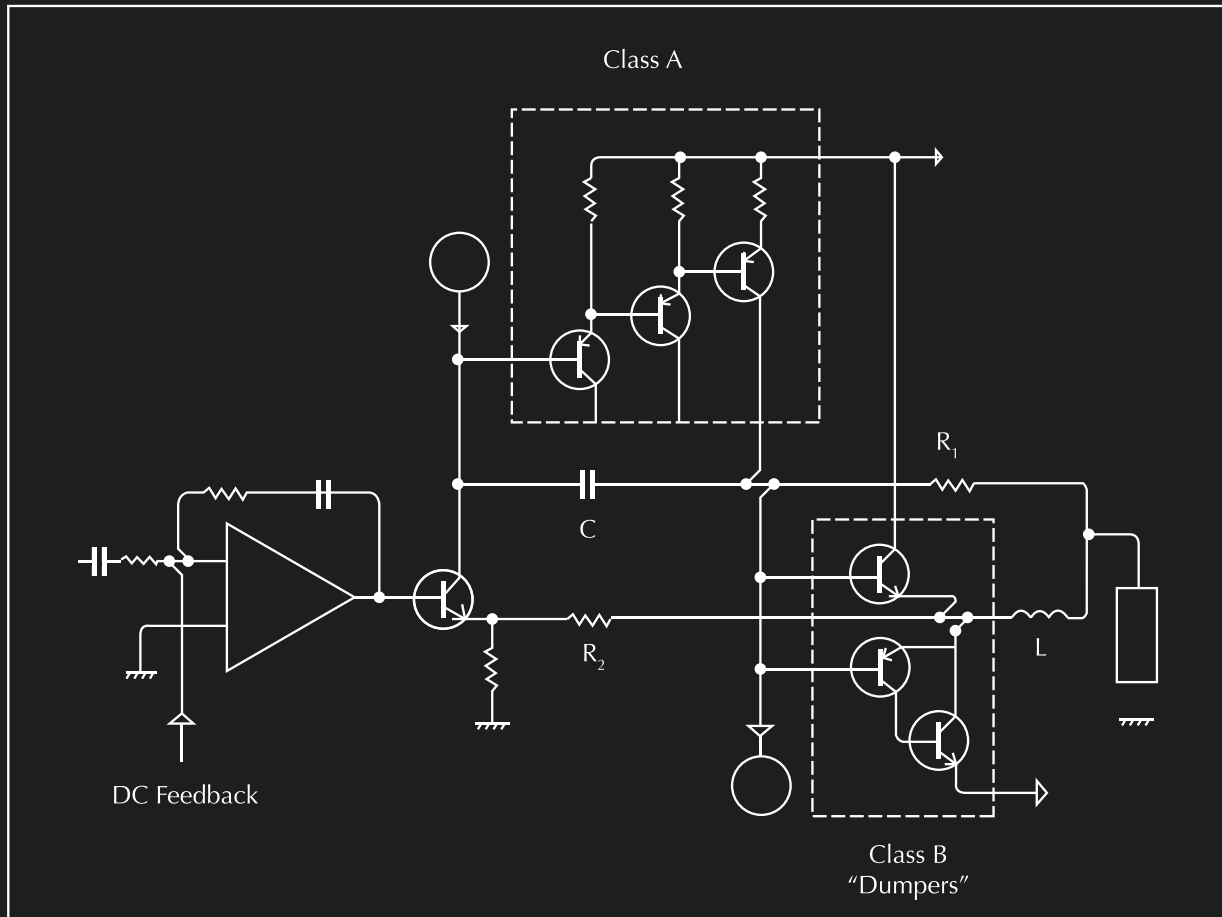
The inclusion of full analogue/digital preamp functionality means that the Artera Play and Play+ can be connected directly to a power amplifier, and its perfect partner in this regard is the Artera Stereo. This compact yet potent power amp sports the latest iteration of Quad's famous Current Dumping topology, first introduced in the legendary Quad 405 – one of the most lauded British audio components of all time and still the only amp design to have earned a Queen's Award for Technological Achievement.

Current Dumping is essentially a method of marrying the superior sonic purity of Class A amplification with the greater efficiency of Class AB. An extremely high-quality, low-power Class A amplifier provides the signal quality, while a high-power current dumping section delivers the muscle to keep the speakers under control. These two amp circuits are combined via a precision network to perfectly impose the finesse of the Class A output onto the power of the current dumper. The result is a relatively compact and cool-running power amp capable of delivering a captivating combination of dynamic power, vice-like grip and sumptuous sonic detail.

For those seeking the huge connectivity options of Artera's players in an all-in-one solution, the Artera Solus is the go-to player. It features a built-in Class-A/B amplifier, capable of powering high-class speakers and reaching astonishing sound qualities.

Both the Artera Solus and Artera Play+ feature additional 6.3mm headphone outputs on the front panel for discrete listening.





"Bridge":  $L$ ,  $C$ ,  $R$  &  $R_2$   
 Bridge is balanced when  $L = R_1 R_2 C$





# Drive The Most Demanding Loudspeakers

The Artera Stereo's power output is conservatively rated at 140W per channel into eight ohms and 250W into four ohms, ensuring any speakers – including Quad's classic ESL electrostatic designs – can be driven with ease. Connectivity options comprise single-ended RCA and balanced XLR inputs, a 12V trigger input and high-quality speaker binding posts. Simple, solid and classy on the outside and devilishly clever within, the Artera Stereo maintains Quad's traditional place at the forefront of modern amplifier design.



"Lush, Gorgeous - choose whatever adjectives you like: The Artera duet respects the music" - Ken Kessler, Hi-Fi News (November 2015)

"In terms of accessibility, sound, features and looks, what we have here are Quad in the present day[...] Visually stunning [...] clean, detailed, potent and musical" – Hi-Fi World (January 2016)

Hi-Fi World 5 Globe Award

“The traditional spirit of Quad has always been to cater for the latest developments in music storage and playback, whilst continually striving to meet the standards inherent in the company’s motto, ‘the closest approach to the original sound’. Thus, the Artera series of components includes full digital and analogue playback capabilities with the resolution and accuracy to replay all current and future high-resolution audio sources with the most musical presentation.

However, today’s consumers are often bewildered and confused by the multiplicity of inputs and controls on modern hi-fi equipment. At Quad, we have never believed that you have to be a ‘hi-fi geek’ to be able to play music at the highest performance level. Artera therefore simplifies the user interface, leaving an uncluttered appearance that is welcoming to all users as well as looking beautiful in the home.”

**- Peter Comeau, Acoustic Director**



Combining the assurance of tradition with the buzz of innovation, Quad Artera is the lifeblood of high-performance audio entertainment for modern music lovers. The Artera Play, Stereo, Play+ and Solus are available now with a choice of black or silver front panels.





# Specifications



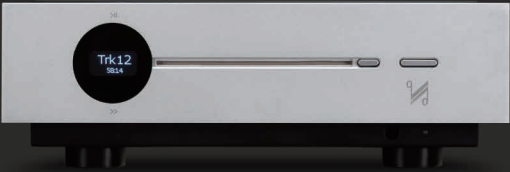
Model		Artera Solus
General Description		CD Player, DAC, Pre-Amp with Integrated amplifier
Key Technology & Features		DSD (up to DSD256 Compatible) Bluetooth aptX
Audio File Formats		ALAC, WAV, FLAC, AIFF, WMA, MP3, AAC, AAC- HE, AAC+, DSD64, DSD128, DSD256
D/A Converter		ESS ES9018 32bit DAC
USB Input		USB B (PC / MAC)
Digital Audio Inputs		2 × Optical TOSlink, 2 × RCA(DIG1, DIG2)
Digital Audio Outputs		1 × Optical TOSlink, 1 x RCA (DIG)
Analogue Inputs		2 × RCA (AUX1, AUX2)
Analogue Outputs		2 x RCA, 2 x Balanced XLR, 6.3mm Headphone Jack
Speaker Outputs		2 x Speaker Binding Post Terminals
Sample Rate (USB B)		44.1kHz, 48kHz, 88.2kHz, 96kHz, 176.4kHz, 192kHz, 384kHz
Sample Rate (USB A)		44.1kHz, 48kHz
Sample Rate (Digital Inputs / Outputs)		44.1 - 192kHz
Standby Power Consumption		<0.5W
Pre-Amplifier Section		
Output Level (1kHz) Variable Output		0 - 4 Vrms (Pre Outputs) 0 – 8 Vrms (Balanced Outputs)
Frequency Response		20Hz-20kHz, 1kHz (± 0.2dB)
Total Harmonic Distortion		<0.002% (20Hz-20kHz)
Signal to Noise Ration(S/N)		>103dB (1kHz) >110dB (A Weighted, 1kHz)
Channel Separation		>100dB (1kHz)
Power Amplifier Section		
Rated Power Output		2 x 75W (8Ω)
Frequency Response		± 0.5dB (20Hz-20kHz, 1kHz)
Total Harmonic Distortion		<0.009% (10W 20Hz-20kHz)
Signal to Noise Ration(S/N)		>100dB (A Weighted, ref. 75W)
Channel Separation		>82dB (A Weighted, ref. 1W)
Dynamic Range A-wtd		>98dB
Dimensions (Unpacked) (H x W x D)		320 x 105 x 320mm
Net Weight		11.84kg



Model	Artera Play+
General Description	CD Player, DAC, Pre-Amp
Key Technology & Features	DSD (up to DSD256 Compatible) Bluetooth aptX
Audio File Formats	ALAC, WAV, FLAC, AIFF, WMA, MP3, AAC, AAC- HE, AAC+, DSD64, DSD128, DSD256
D/A Converter	ESS ES9018 32bit DAC
USB Input	USB B (PC / MAC)
Digital Audio Inputs	2 × Optical TOSlink, 2 × RCA(DIG1, DIG2)
Digital Audio Outputs	1 × Optical TOSlink, 1 x RCA (DIG)
Analogue Inputs	2 × RCA(AUX1, AUX2)
Analogue Outputs	2 x RCA, 2 x Balanced XLR, 6.3mm Headphone Jack
Sample Rate (USB B)	44.1kHz, 48kHz, 88.2kHz, 96kHz, 176.4kHz, 192kHz, 384kHz
Sample Rate (USB A)	44.1kHz, 48kHz
Sample Rate (Digital Inputs / Outputs)	44.1 - 192kHz
Standby Power Consumption	<0.5W
Pre-Amplifier Section	
Output Level (1kHz) Variable Output	0 - 4 Vrms (Pre Outputs) 0 – 8 Vrms (Balanced Outputs)
Frequency Response	20Hz-20kHz, 1kHz (± 0.2dB)
Total Harmonic Distortion	<0.002% (20Hz-20kHz)
Signal to Noise Ration(S/N)	>103dB (1kHz) >110dB (A Weighted, 1kHz)
Channel Separation	>100dB (1kHz)
Dimensions (Unpacked) (H x W x D)	320 x 105 x 320mm
Net Weight	9.04kg



# Specifications



Model	Artera Play
General Description	CD Player & DAC
D/A Converter	ESS ES9018 32bit DAC
Output Level (1kHz)	0 - 2.5 Vrms (PRE Outputs) 0 - 5 Vrms (Balanced Outputs)
L/R Channel Difference	±0.02dB (1kHz)
Frequency Response	-0.2dB (20Hz-20kHz, 1kHz)
Total Harmonic Distortion	<0.001% (20Hz-20kHz)
Linearity	±0.01dB (20Hz-20kHz)
Signal to Noise Ratio (S/N)	>110dB (1kHz) >118dB (Weighted, 1kHz)
Channel Separation	>100dB (1kHz)
USB Input	1 × USB (Support HID)
USB Input Sampling Rates	44.1kHz, 48kHz, 88.2kHz, 96kHz, 176.4kHz, 192kHz, 384kHz
USB DSD	DSD64, DSD128, DSD256
Digital Audio Inputs	2 × OpticalTOSlink 2 × RCA (DIG1, DIG2)
Digital Audio Outputs	1 × OpticalTOSlink 1 ×RCA (DIG)
Digital Inputs & outputs Sampling Rates	44.1 - 192kHz
Analogue Inputs	2 × RCA(AUX1, AUX2)
Analogue Outputs	2 x XLR, RCA (PRE)
Dimension (W x D x H)	320 x 320 x 105mm
Weight	8.5 kg



Model	Artera Stereo
General Description	Power Amplifier
Rated Output Power	140W 8 ohm (<1%THD,1kHz)
Total Harmonic Distortion	<0.003% (100W, 1kHz) <0.03% (100W, 20Hz-20kHz)
Frequency Response	-0.5dB (20Hz-20kHz, ref. 1kHz) -3dB (20Hz-70kHz, ref. 1kHz)
Input Sensitivity	980mV(RCA line in)
Input Impedance	10kohm (Balanced) 15kohm (Unbalanced)
Signal to Noise Ration(S/N)	115dB (A weighted, ref. 140W)
Maximum Power Consumption	750W
Inputs	2 x XLR, RCA
Outputs	Speaker A+B
Standby Power Consumption	<0.5W
Dimensions (W x H x D)	320 x 158 x 338mm
Weight	15kg

Features

	Artera Play	Artera Play+	Artera Solus	Artera Stereo
CD	✓	✓	✓	✗
Preamp	✓	✓	✓	✗
ESS ES9018 32bit DAC	✓	✓	✓	✗
Up to 384kHz Sample Rate via USB B	✓	✓	✓	✗
4 User Selectable Filters	✓	✓	✓	✗
HID Mode	✓	✓	✓	✗
Standby Trigger	✓	✓	✓	✓
Bluetooth aptX	✗	✓	✓	✗
Amplifier	✗	✗	✓	✓
Current Dumping Topology	✗	✗	✗	✓
Class AB Topology	✗	✗	✓	✗
140W RMS x 2 (8 Ohms)	✗	✗	✗	✓
75W RMS x 2 (8Ohms)	✗	✗	✓	✗

Inputs

2 x OptTOSlink	✓	✓	✓	✗
2 x Digital RCA	✓	✓	✓	✗
2 x Analogue RCA	✓	✓	✓	✓
2 x Balanced XLR	✗	✗	✗	✓
USB B (PC / MAC)	✓	✓	✓	✗

Outputs

1 x Digital RCA	✓	✓	✓	✗
1 x OptTOSlink	✓	✓	✓	✗
2 x Analogue RCA	✓	✓	✓	✗
2 x Balanced XLR	✓	✓	✓	✗
6.3mm Headphone Jack	✗	✓	✓	✗
2 x Speaker Binding Post Terminals	✗	✗	✓	✓











QUAD

IAG House, 13/14 Glebe Road, Huntingdon, Cambridgeshire, PE29 7DL, UK  
Tel: +44(0)1480 452561 Web: [www.quad-hifi.co.uk](http://www.quad-hifi.co.uk)